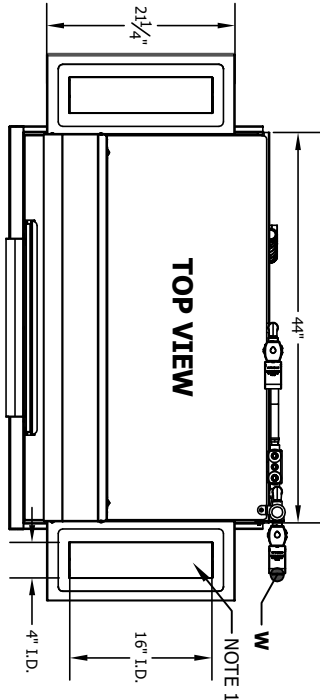


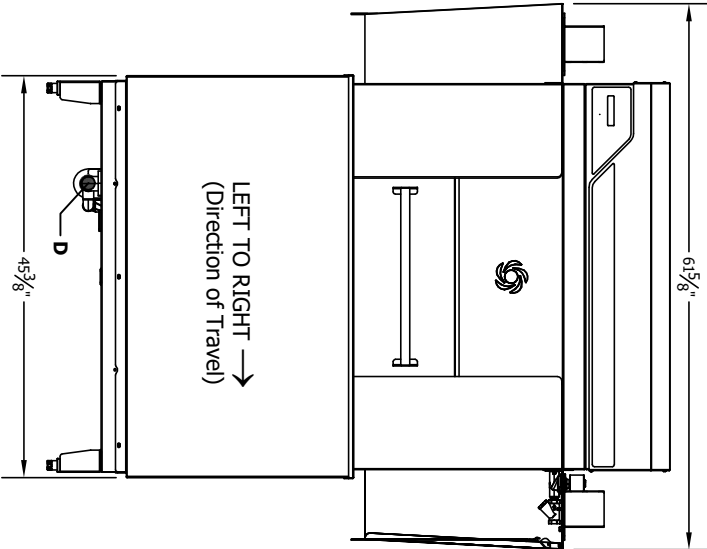
INSTALLATION CONNECTIONS

Description	Note
D DRAIN CONNECTION	1-1/2 F-NPT
W HOT WATER INLET (110° F MIN.)	1/2 F-NPT
E1 MAIN ELECTRICAL (SINGLE & 2-POINT)	1-3/8 HOLE
E2 BOOSTER ELECTRICAL (2 PT ONLY)	1-3/8 HOLE
C CHEMICAL LINE & SIGNAL ACCESS	1/2 HOLES (4)

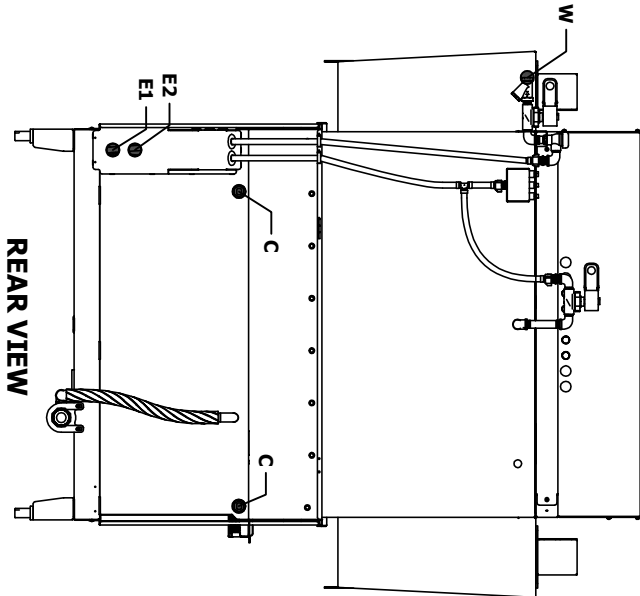
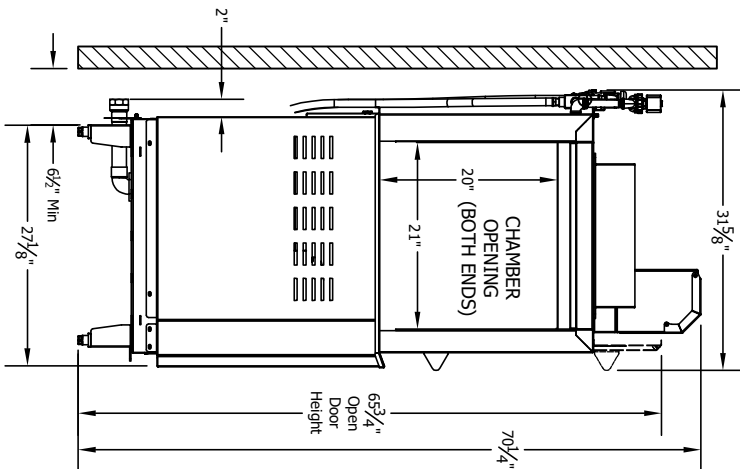
- NOTES:
- VENTS & ADJUSTABLE DAMPERS FURNISHED ONLY WHEN SPECIFIED.
  - ALLOW 24" MIN. CLEARANCE BELOW DISH TABLE TO SERVICE ELECTRICAL EQUIPMENT



FRONT VIEW



SIDE VIEW



REAR VIEW

FEET ARE ADJUSTABLE ±1 IN  
REFER TO SPEC SHEET FOR ALL UTILITY REQUIREMENTS  
PLEASE CONTACT FACTORY FOR TECHNICAL QUESTIONS

UNLESS OTHERWISE SPECIFIED, DIMENSIONS ARE IN INCHES

XX .XXX FRACTIONS	ANGLES
±.02 ±.005	±1/32 ±1/2

INSINGER MACHINE CO.  
6248 STATE ROAD  
PHILADELPHIA, PA 19135

INSINGER  
ADMIRAL 44 ADVANCED L-R

DESCRIPTION: High Temperature Rack Conveyor  
Electrically Heated  
Destemming Machine  
Left Hand Feed

SCALE: 1:1

REVISION DATE: 01/31/25

REV: A

SHEET 1 OF 1

MODEL:

PHONE: (215) 624-4800